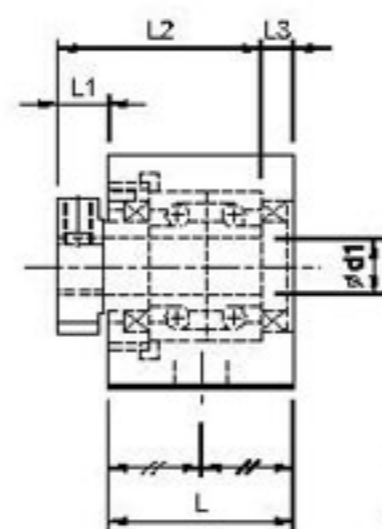


EK 固定側

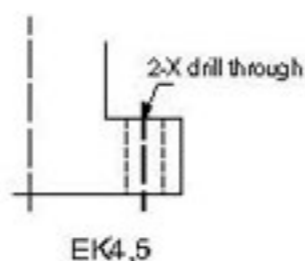
EK06, EK08



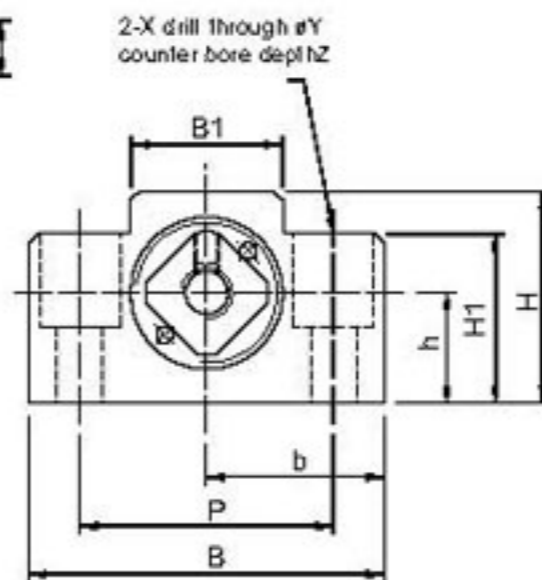
EK10~EK20



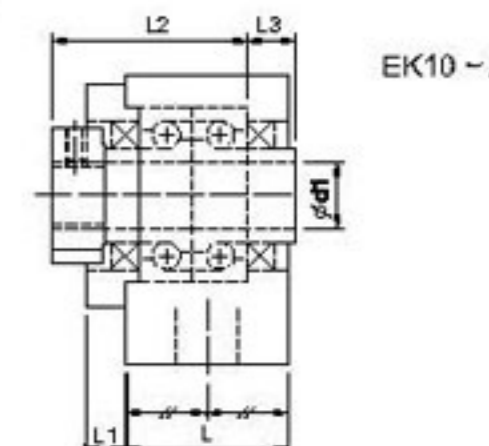
EK4 ~ 8



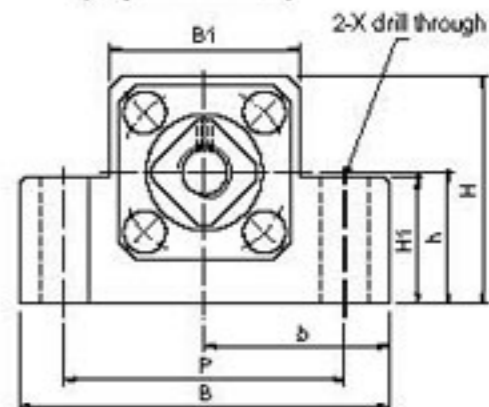
EK4,5



EK6,8



EK10 ~ 20



Unit : mm

型號	d1	L	L1	L2	L3	B	H	$b^{±0.02}$	$h^{±0.02}$	B1	H1	P	X	Y	Z	M	T
EK 05	5	16.5	5.5	18.5	3.5	36	21	18	11	20	8	28	4.5	—	—	M2.6	11
EK 06	6	20	5.5	22	3.5	42	25	21	13	18	20	30	5.5	9.5	11	M3	12
EK 08	8	23	7	26	4	52	32	26	17	25	26	38	6.6	11	12	M3	14
EK 10	10	24	6	29.5	6	70	43	35	25	36	24	52	9	—	—	M3	16
EK 12	12	24	6	29.5	6	70	43	35	25	36	24	52	9	—	—	M3	19
EK 15	15	25	6	36	5	80	49	40	30	41	25	60	11	—	—	M3	22
EK 20	20	42	10	50	10	95	58	47.5	30	56	25	75	11	—	—	M4	30