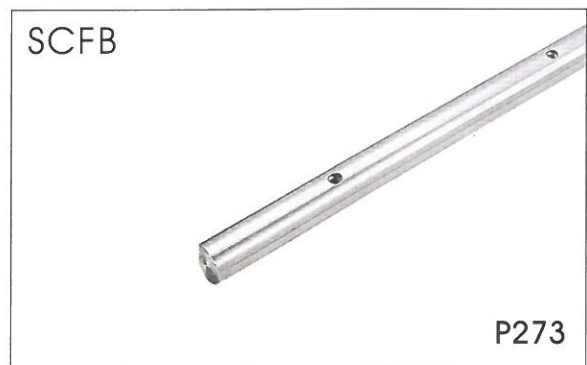
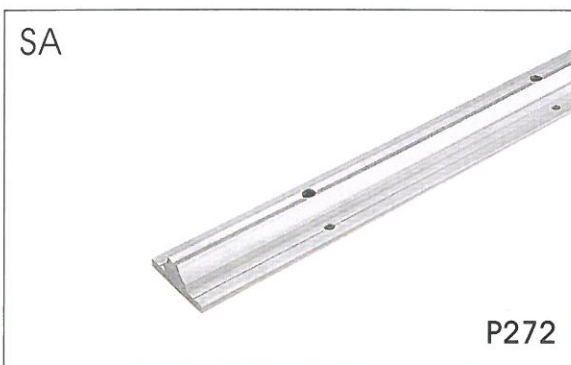
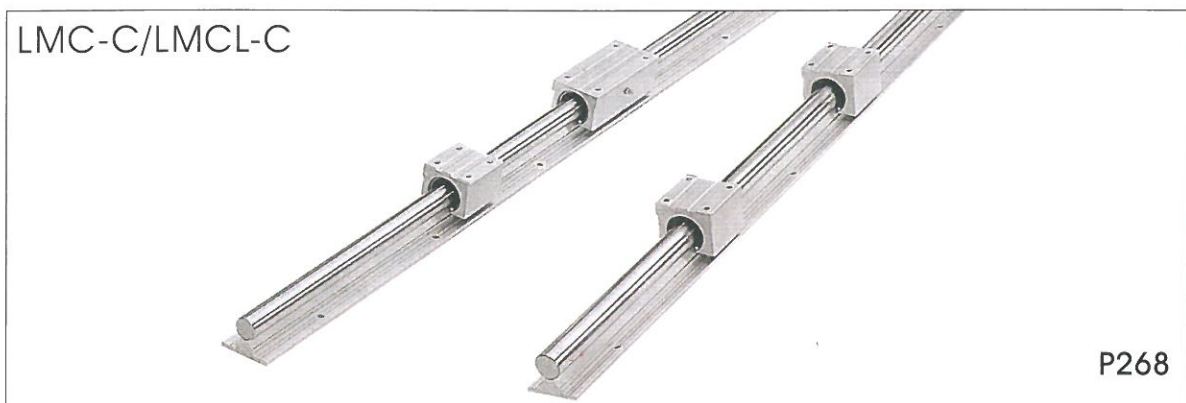
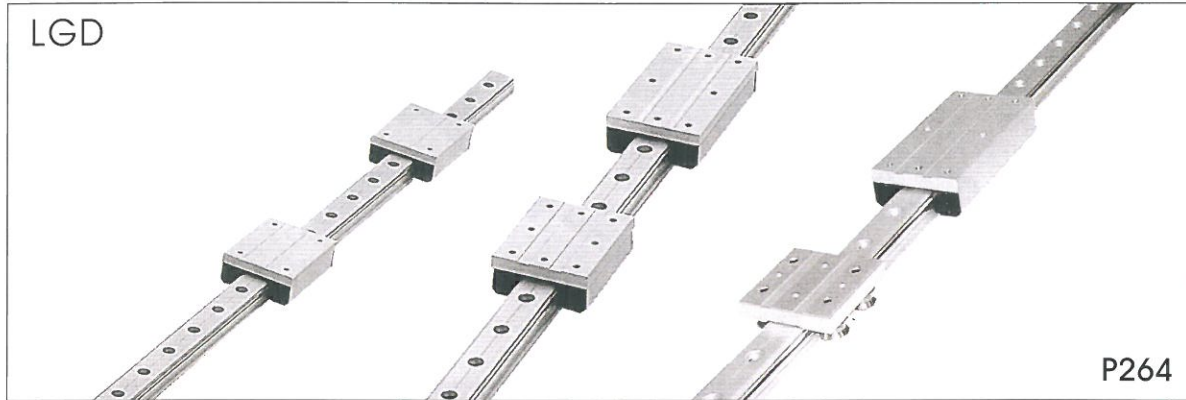


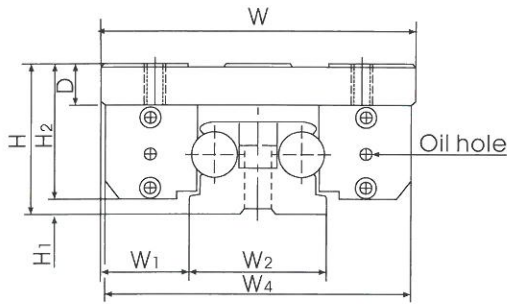
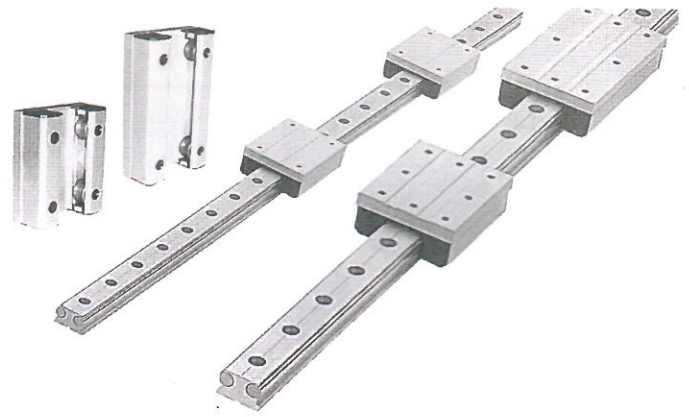
SHAFT TYPE LINEAR GUIDES 軸心式滑軌



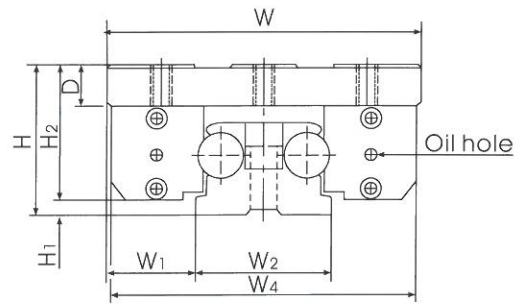
SHAFT TYPE LINEAR GUIDES 軸心式滑軌

軸心式滑軌

LGD 軸心式滑軌(不生銹)
Anticorrosive Linear Guide
專利新型可調式



LGD-8A / LGD-8L



LGD-12A / LGD-12L
LGD-16A / LGD-16L

型號 Model NO.	軸徑 Shaft diameter	組合尺寸 Dimensions of assembly			滑塊尺寸 Dimensions of block									
		H	H ₁	W ₁	W	W ₄	H ₂	D	L ₁	B	B ₁	C	C ₁	Slot depth
LGD-8A	8	30	3.5	16	60	59	26	9	70	40	10	50	10	M6X9
LGD-8L									100			80		
LGD-12A	12	40	4	23	82	80	36	12	100	27	14	38	12	M6X12
LGD-12L									140			58		
LGD-16A	16	50	5	35	120	118	45	14	150	45	15	60	15	M8X16
LGD-16L									190			80		

Example of identification number:

LGD - 12A - 2 - R1800

① ② ③

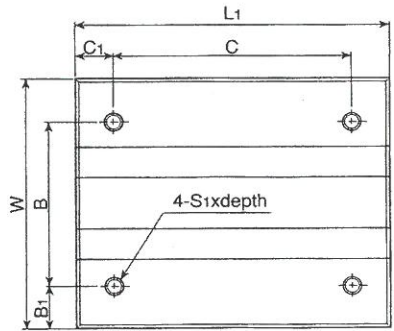
① Model No.

② Number of blocks per track rail:
1:1 Block 2:2 Blocks 3:3 Blocks,.....

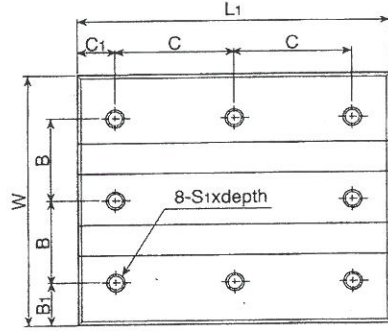
③ Length of track rail (1800mm):
Shaft: Hardened(HRC62±2)ground and chromium plated

SHAFT TYPE LINEAR GUIDES 軸心式滑軌

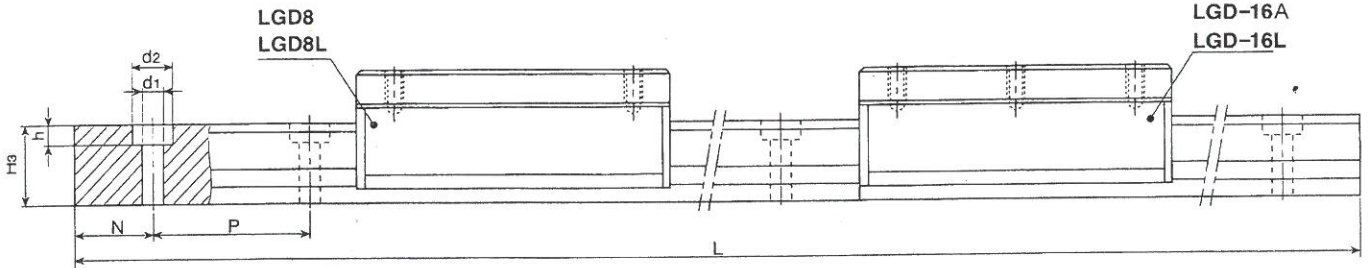
軸心式滑軌



LGD-8A/ LGD-8L

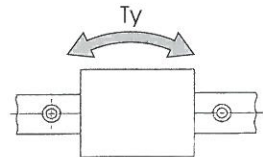
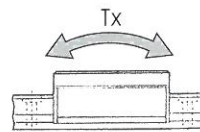
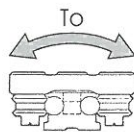


LGD-12A/ LGD-12L
LGD-16A/ LGD-16L



單位(unit): mm

滑道尺寸 Dimensions of track rail								基本動定格荷重 Basic dynamic load rating C(kgf)	基本靜定格荷重 Basic static load rating Co(kgf)	容許靜力矩 Allowable static moment			型號 Model NO.
W ₂	H ₃	d ₁	d ₂	h	p	N	L(max)			To (kgf-m)	Tx (kgf-m)	Ty (kgf-m)	
28	20	5.7	10.4	5.2	50	25	3,000	80	130	3.6	3.0	3.2	LGD-8A
										3.6	4.6	5.5	LGD-8L
36	25	6.8	12.6	6.2	50	25	4,000	180	290	5.4	4.0	4.8	LGD-12A
										5.4	7.2	8.5	LGD-12L
50	32	9	21	8	80	40	4,000	330	530	13.5	19.8	21.6	LGD-16A
										13.5	35.6	38.2	LGD-16L



訂購例

LGD - 12A - 2 - R1800

- ①
- ②
- ③

① 型號

② 1支滑軌上滑塊之個數:

1:1個、2:2個、3:3個,...

③ 滑軌長度(1800mm):

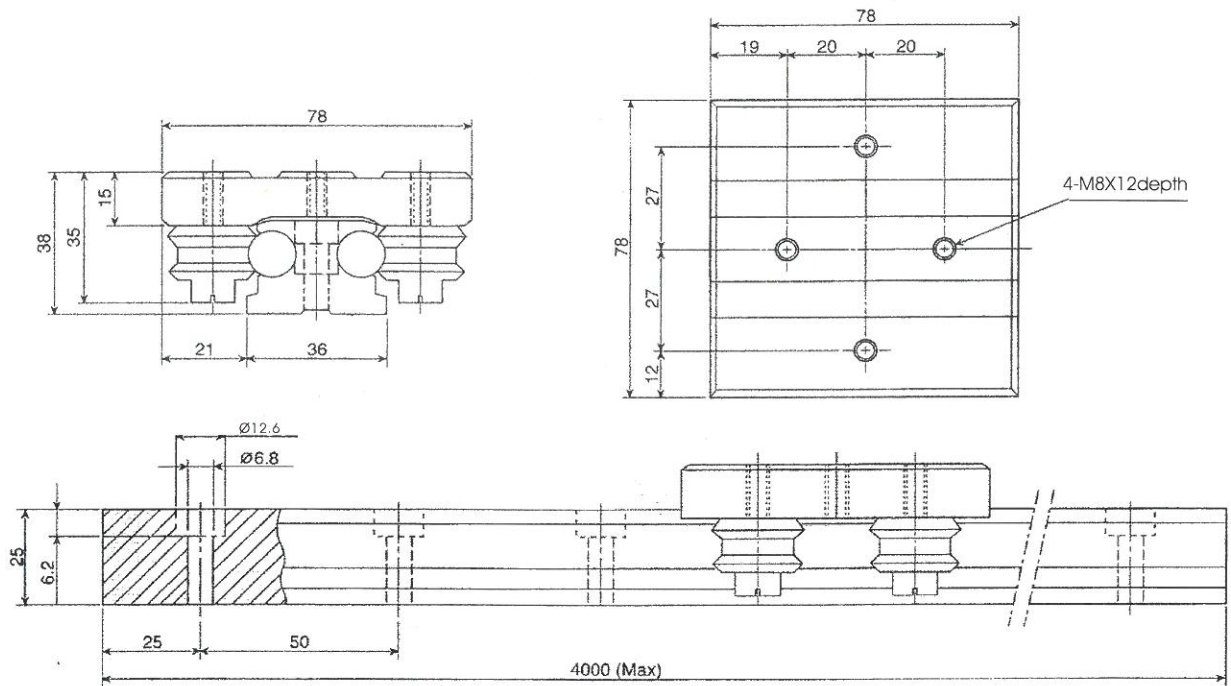
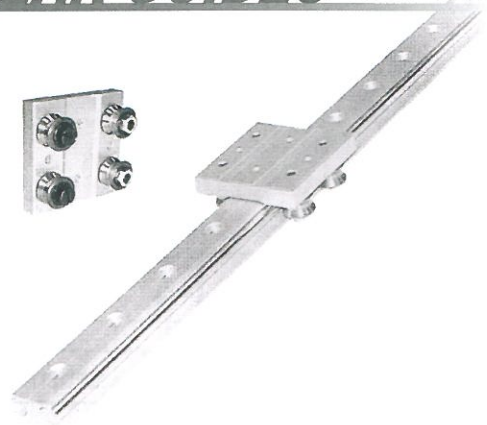
軸心: 熱處理(HRC62±2), 鍍硬銻及研磨

SHAFT TYPE LINEAR GUIDES 軸心式滑軌

軸心式滑軌

LGD-12E 軸心式滑軌(不生銹)

Anticorrosive Linear Guide
經濟型 Economical Type



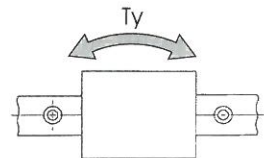
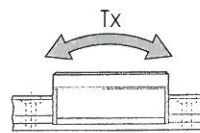
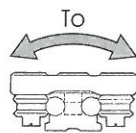
訂購例：

LGD - 12E - 2 - R1800

① ② ③

- ① 型號:LGD-12E
- ② 1支滑軌上滑塊之個數:
1:1個、2:2個、3:3個,...
- ③ 滑軌長度(1800mm):
軸心:熱處理(HRC62±2),鍍硬鉻及研磨

基本動定格荷重 Basic dynamic load rating C(kgf)	基本靜定格荷重 Basic static load rating Co(kgf)	容許靜力矩 Allowable static moment			重量 Weight	
		To (kgf-m)	Tx (kgf-m)	Ty (kgf-m)	滑塊 Block kg	軌道 Track rail kg/m
140	230	4.2	3.2	3.8	0.36	3.2



Example of identification number:

LGD - 12E - 2 - R1800

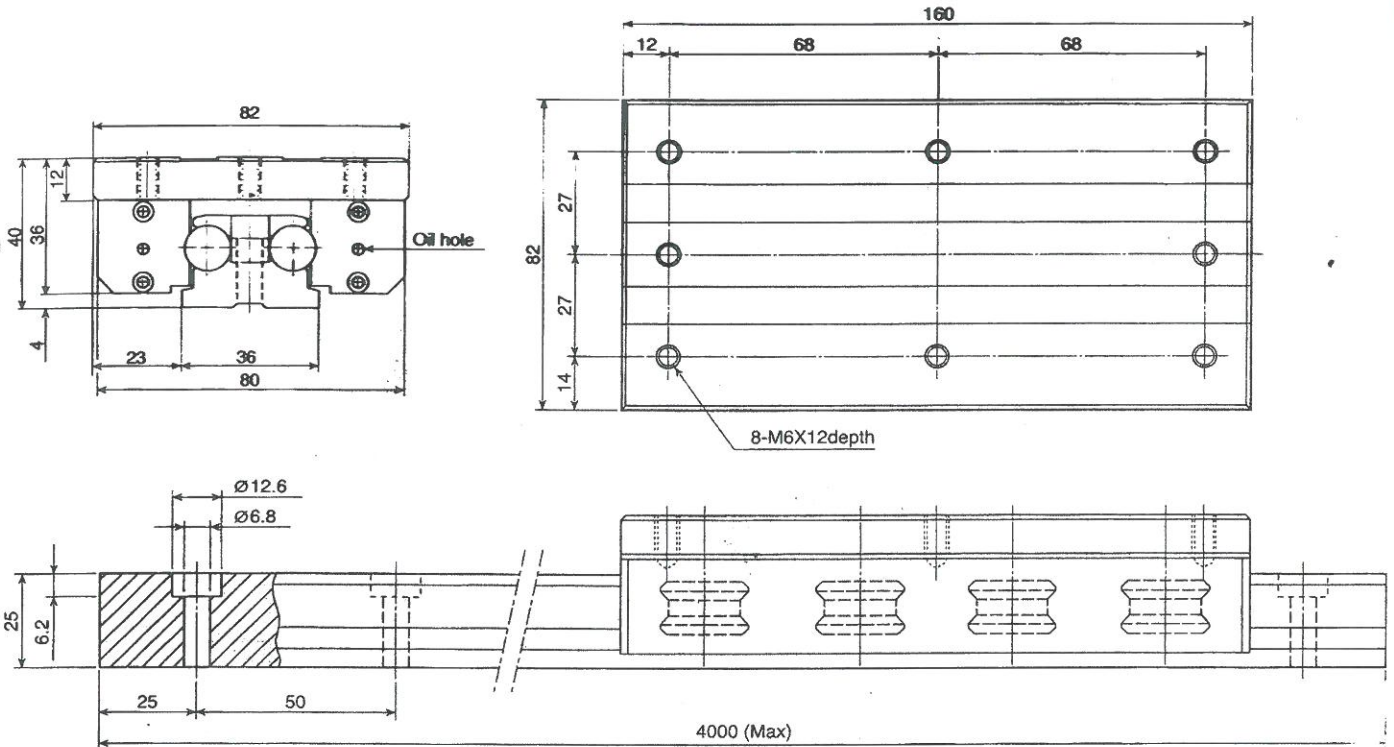
① ② ③

- ① Model No.:LGD-12E
- ② Number of blocks per track rail:
1:1 Block 2:2 Blocks 3:3 Blocks,....
- ③ Length of track rail (1800mm):
Shaft:Hardened(HRC62±2)ground and chromium plated

SHAFT TYPE LINEAR GUIDES 軸心式滑軌

LGD-12X 軸心式滑軌(不生銹)

Anticorrosive Linear Guide
荷重型 Heavy Load Type



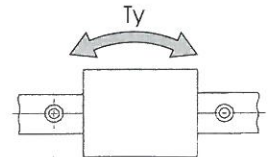
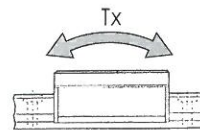
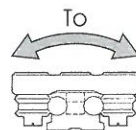
訂購例：

LGD - 12X - 2 - R1800

① ② ③

- ① 型號:LGD-12X
- ② 1支滑軌上滑塊之個數:
1:1個、2:2個、3:3個,...
- ③ 滑軌長度(1800mm):
軸心：熱處理(HRC62±2)，鍍硬鉻及研磨

基本動定格荷重 Basic dynamic load rating C(kgf)	基本靜定格荷重 Basic static load rating Co(kgf)	容許靜力矩 Allowable static moment			重量 Weight	
		To (kgf-m)	Tx (kgf-m)	Ty (kgf-m)	滑塊 Block kg	軌道 Track rail kg/m
290	460	8.7	11.2	13.6	0.86	3.2



Example of identification number:

LGD - 12X - 2 - R1800

① ② ③

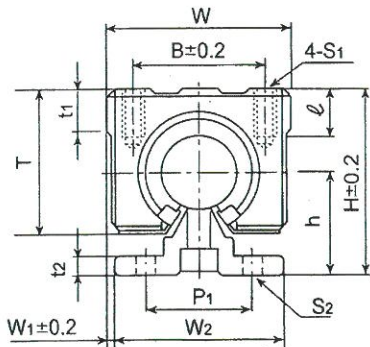
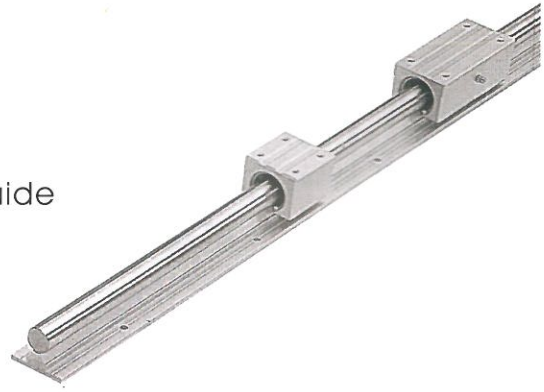
- ① Model No.:LGD-12X
- ② Number of blocks per track rail:
1:1 Block 2:2 Blocks 3:3 Blocks,...
- ③ Length of track rail (1800mm):
Shaft:Hardened(HRC62±2)ground and chromium plated

SHAFT TYPE LINEAR GUIDES 軸心式滑軌

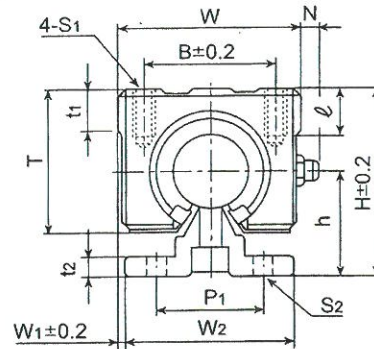
軸心式滑軌

LMC-C
LMCL-C

軸心式滑軌(不生銹)
Anticorrosive Linear Guide



LMC-C
LMC-C16 ~ LMC-C40



LMCL-C
(加長型/Long Type)
LMCL-C16 ~ LMCL-C30

型號 Model NO.	軸徑 Shaft diameter	組合尺寸 Dimensions of assembly				滑塊尺寸 Dimensions of block							
		H	h	W ₁	W	L ₁	B	C	t ₁	φ	S ₁	T	N
LMC-C16	16	45	25	2.5	45	45	32	30	9	12	M5	33	-
LMCL-C16						85		60					8
LMC-C20	20	50	27	1.5	48	50	35	35	11	12	M6	39	-
LMCL-C20						96		70					8
LMC-C25	25	60	33	2.5	60	65	40	40	14	12	M6	47	-
LMCL-C25						130		100					8
LMC-C30	30	70	37	5	70	70	50	50	15	18	M8	56	-
LMCL-C30						140		110					8
LMC-C40	40	90	48	7.5	90	90	65	65	20	20	M10	72	-

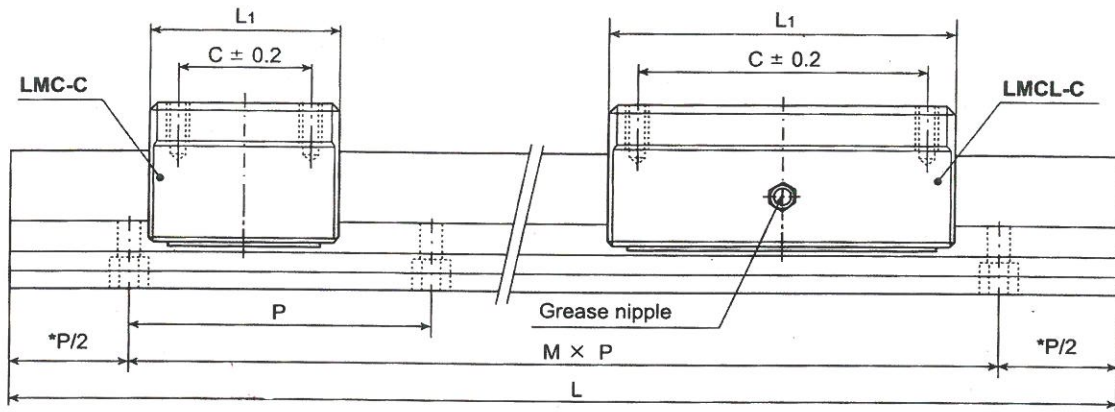
Example of identification number:

LMC - C25 - 2 - 2400

① ② ③ ④

- ① Model No: LMC-C, LMCL-C
- ② Shaft Diameter: Shaft: Hardened(HRC62±2) ground and chromium plated
- ③ Number of blocks per track rail: 1:1 Block 2:2 Blocks 3:3 Blocks,....
- ④ Length of track rail :(2400mm)

SHAFT TYPE LINEAR GUIDES 軸心式滑軌



註：* 記號，全長L視長度情況，則不受P/2限制。
Note: * is to be changed by the length L.

單位(unit): mm

軌道尺寸 Dimensions of track rail						基本動定格荷重 Basic dynamic load rating	基本靜定格荷重 Basic static load rating	型號 Model NO.
W ₂	P ₁	t ₂	P	S ₂	L(max)	C(kgf)	Co(kgf)	
40	30	5	150	5.5	3,600	79	120	LMC-C16
						158	240	LMCL-C16
45	30	5	150	5.5	4,200	90	140	LMC-C20
						180	280	LMCL-C20
55	35	6	200	6.5	4,200	100	160	LMC-C25
						200	320	LMCL-C25
60	40	7	200	6.5	4,200	160	280	LMC-C30
						320	560	LMCL-C30
75	55	9	300	9	4,200	220	410	LMC-C40

訂購例：

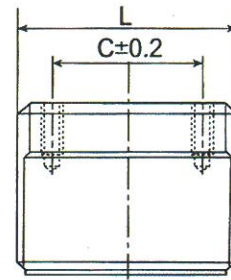
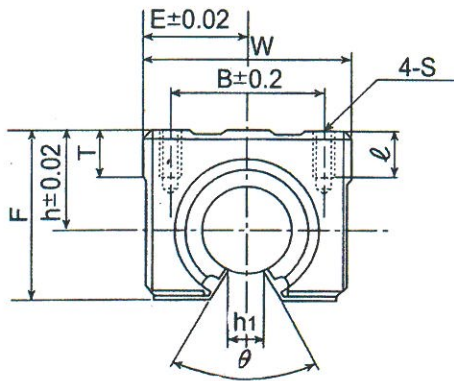
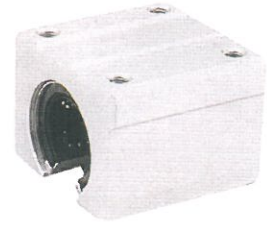
LMC - C25 - 2 - 2400
 ① ② ③ ④

- ① 型號：LMC-C, LMCL-C
- ② 軸徑：軸心熱處理(HRC62±2)鍍硬鉻及研磨
- ③ 1支滑軌上滑塊之個數：1:1個、2:2個、3:3個、...
- ④ 滑軌長度：(2400mm)

SHAFT TYPE LINEAR GUIDES 軸心式滑軌

開口型連座線性軸承

LMC 開口型連座線性軸承 Open Type Linear Block

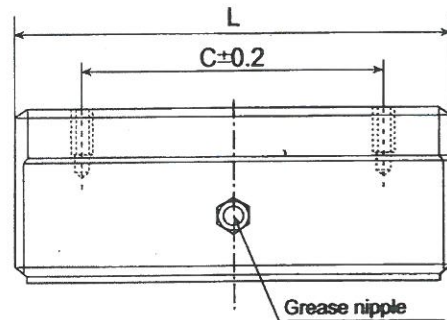
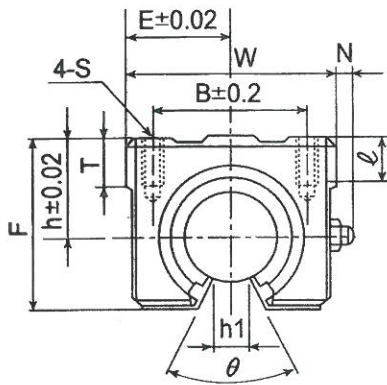
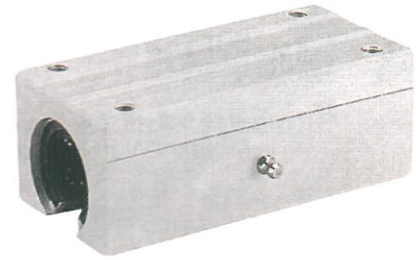


單位(unit): mm

型號 Model NO.	軸徑 Shaft diameter	主要尺寸 Main dimensions								裝配尺寸 Mounting dimension				線性軸承 Linear ball bearing			重量 Weight g
		h	E	W	L	F	T	h ₁	θ	B	C	S	ℓ	型號 Linear ball bearing No.	基本動定格荷重 Basic dynamic load rating C(kgf)	基本靜定格荷重 Basic static load rating Co(kgf)	
LMC-16UU	16	20	22.5	45	45	33	9	10	80°	32	30	M5	12	LM16UU OP	79	120	150
LMC-20UU	20	23	24	48	50	39	11	10	60°	35	35	M6	12	LM20UU OP	90	140	200
LMC-25UU	25	27	30	60	65	47	14	11.5	50°	40	40	M6	12	LM25UU OP	100	160	450
LMC-30UU	30	33	35	70	70	56	15	14	50°	50	50	M8	18	LM30UU OP	160	280	630
LMC-40UU	40	42	45	90	90	72	20	19	50°	65	65	M10	20	LM40UU OP	220	410	1,330

SHAFT TYPE LINEAR GUIDES 軸心式滑軌

LMC-L 開口加長型連座線性軸承 Open Long Type Linear Block



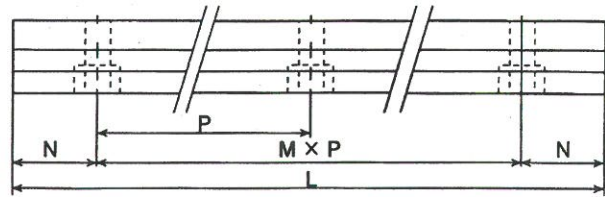
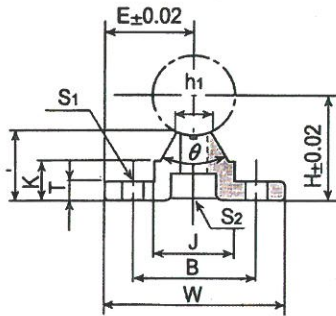
單位(unit): mm

型號 Model NO.	軸徑 Shaft diameter	主要尺寸 Main dimensions									裝配尺寸 Mounting dimension				線性軸承 Linear ball bearing			重量 Weight g
		h	E	W	L	F	T	N	h ₁	θ	B	C	S	φ	型號 Linear ball bearing No.	基本動定格荷重 Basic dynamic load rating C(kgf)	基本靜定格荷重 Basic static load rating Co(kgf)	
LMC-16LUU	16	20	22.5	45	85	33	9	8	10	80°	32	60	M5	12	LM16UU OPX2	158	240	300
LMC-20LUU	20	23	24	48	96	39	11	8	10	60°	35	70	M6	12	LM20UU OPX2	180	280	400
LMC-25LUU	25	27	30	60	130	47	14	8	11.5	50°	40	100	M6	12	LM25UU OPX2	200	320	900
LMC-30LUU	30	33	35	70	140	56	15	8	14	50°	50	110	M8	18	LM30UU OPX2	320	560	1,260

SHAFT TYPE LINEAR GUIDES 軸心式滑軌

SA 軸心支持座 Supporter For Tapped Shaft

材質：鋁合金
Material: Aluminum alloy



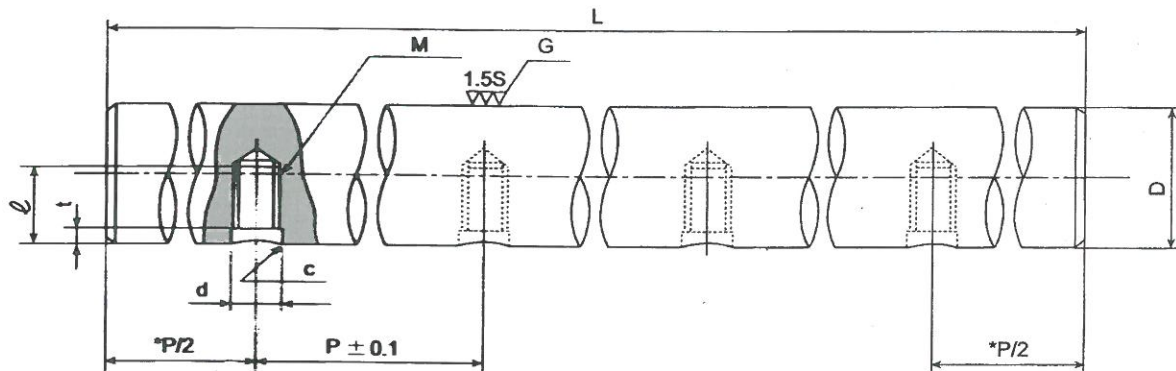
單位(unit): mm

型號 Model NO.	軸徑 Shaft diameter	主要尺寸 Main dimensions										裝配尺寸 Mounting dimension				重量 Weight g	
		H	E	W	L	F	T	K	J	h ₁	θ	B	N	MxP	S ₁		S ₂
SA16-600	16	25	20	40	600	17.8	5	11.7	18.5	8	80°	30	75	3x150	5.5	M5	600
SA20-600	20	27	22.5	45	600	17.7	5	10	19	8	50°	30	75	3x150	5.5	M6	610
SA20-1200					1200									7x150			
SA25-600	25	33	27.5	55	600	21	6	12	21.5	8	50°	35	100	2x200	6.5	M6	800
SA25-1200					1200									5x200			1,760
SA30-600	30	37	30	60	600	22.8	7	13	26.5	10.3	50°	40	100	2x200	6.5	M8	1,100
SA30-1200					1200									5x200			2,200
SA40-600	40	48	37.5	75	600	29.4	9	17	38	15.5	50°	55	150	1x300	9	M8	1,950
SA40-1200					1200									3x300			3,900

SHAFT TYPE LINEAR GUIDES 軸心式滑軌

SCFB 外徑攻牙軸心(不生銹) Tapped Shaft (Anticorrosive)

材質：軸承鋼(SUJ2)高週波熱處理
Material: SUJ2(high carbon chromium steel)
研磨及表面鍍硬鉻
Heat treatment, ground, chromium plated and polished
硬度：HRC 62±2
Hardness: HRC 62±2



註：* 記號，全長L視長度情況，則不受P/2限制。
Note: * is to be changed by the length L.

單位(unit): mm

外徑 Diameter	型號 Type	外徑公差 μm Diameter tolerance	孔距 Pitch	螺栓 Nominal screw	螺牙深度 Thread depth	沈窩孔 Counter bore	沈窩孔深 Depth of counter bore	倒角 Chamfer	最大長度 Max length	重量 Weight
D	SCFB	g6	P	M	ℓ	d	t _(ref)	c _(ref)	L(max)	kg/m
16	SCFB16	-6~-17	150	M5x0.8	9	5.5	2.5	0.7	3,600	1.58
20	SCFB20	-7~-20	150	M6x1	10	6.5	2.5	0.7	4,200	2.47
25	SCFB25	-7~-20	200	M6x1	12	6.5	2.5	0.7	4,200	3.85
30	SCFB30	-7~-20	200	M8x1.25	15	8.5	3.0	1	4,200	5.55
35	SCFB35	-9~-25	200	M8x1.25	15	8.5	3.0	1	4,200	7.55
40	SCFB40	-9~-25	300	M8x1.25	18	8.5	3.0	1	4,200	9.87

Example of identification number:

SCFB 20 X 1500

① ②

- ① Type: Shaft diameter
- ② Overall Length

訂購例：

SCFB 20 X 1500

① ②

- ① 型號：軸心外徑
- ② 總長度